


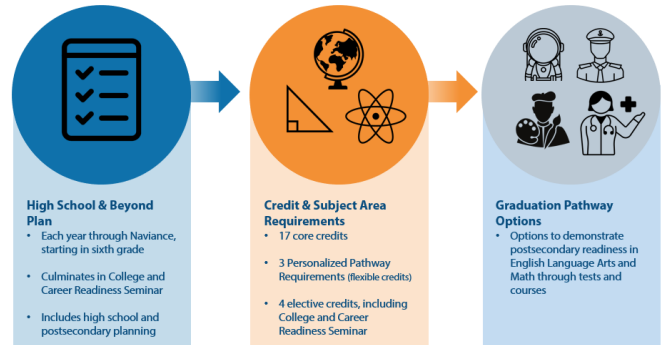
Planning for High School & Beyond

<p>On your sticky note, put your responses to the following questions...</p>	<ol style="list-style-type: none"> 1. How many credits do you need to graduate? 2. How many credits will you have earned in total by the end of this semester? 3. Put down <u>one</u> idea you have about what you may want to do after high school. 				
<p>Think about what you would like to do in the future as a career...</p>	<p>When choosing your classes for next year begin with the end in mind and think about your future career path.'</p> <p><i>"What do I want to do after I graduate and what classes will help me reach my future goals?"</i></p>				
<p>Check out Naviance for exploring career clusters and related careers.</p>	<p>Career Cluster – A group of jobs and industries related by skills or products.</p> <table border="1" data-bbox="927 800 1411 1020"> <thead> <tr> <th>Career Cluster</th><th>Related Careers</th></tr> </thead> <tbody> <tr> <td>Health Science</td><td>Dentist, Nurse, Paramedic etc.</td></tr> </tbody> </table>	Career Cluster	Related Careers	Health Science	Dentist, Nurse, Paramedic etc.
Career Cluster	Related Careers				
Health Science	Dentist, Nurse, Paramedic etc.				
<p>1. Log into Naviance</p>	<div data-bbox="805 1031 943 1167">  </div> <p>Username: district ID#</p> <p>Password: district password</p>				
<p>2. Locate any career clusters or specific careers you have saved or add more to your list.</p>	<div data-bbox="805 1188 1523 1934"> <div data-bbox="805 1188 927 1266"> <div>Careers</div> </div> <div data-bbox="980 1205 1029 1236">➔</div> <div data-bbox="1073 1188 1365 1266"> <div>Career Exploration</div> <div>♥ Favorite Careers and Clusters</div> </div> <div data-bbox="805 1461 1105 1549"> <div>Explore Careers</div> <div>Explore Clusters and Pathways</div> </div> <div data-bbox="1097 1293 1523 1934"> <div>➤ Agriculture, Food and Natural Resources</div> <div>➤ Architecture and Construction</div> <div>➤ Arts, Audio/Video Technology and Communications</div> <div>➤ Business Management and Administration</div> <div>➤ Education and Training</div> <div>➤ Finance</div> <div>➤ Government and Public Administration</div> <div>➤ Health Science</div> <div>➤ Hospitality and Tourism</div> <div>➤ Human Services</div> <div>➤ Information Technology</div> <div>➤ Law, Public Safety, Corrections and Security</div> <div>➤ Manufacturing</div> <div>➤ Marketing</div> <div>➤ Science, Technology, Engineering and Mathematics</div> <div>➤ Transportation, Distribution and Logistics</div> </div> </div>				

Planning for High School & Beyond

What are the graduation requirements?

What are the graduation requirements?



What is a High School & Beyond Plan?

The HSBP will help you explore your interest, set personal goals, and guide you towards figuring out what you want to do after high school when it comes to career and college/post-secondary options.

Each year in grades 9-12, you will update your plans in Naviance through the HSBP survey for each grade level.

Your High School and Beyond Plan (HSBP) is a Washington State graduation requirement.

Your **High School & Beyond Plan** is a graduation requirement.

Shows up on your official transcript as **MET**

***** ADDITIONAL STATE REQUIREMENTS *****	
HIGH SCHOOL & BEYOND PLAN	NOT MET
WASHINGTON STATE HISTORY	MET

GRADUATION PATHWAY	NOT MET

***** ADDITIONAL STATE REQUIREMENTS *****	
HIGH SCHOOL & BEYOND PLAN	MET
WASHINGTON STATE HISTORY	MET

GRADUATION PATHWAY	MET

3. Think about all the credit requirements in each area. You can use the **graduation checklist** to keep track of the classes you have taken in high school.

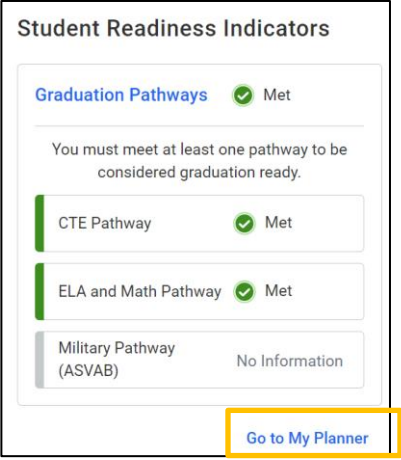

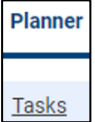
English 4.0 credits	+	Math 3.0 credits	+	Science 3.0 credits
Social Studies 3.0 credits	+	Health 0.5 credit	+	PE 1.5 credits
CTE 1.0 credit	+	CCRS 0.5 credit	+	Electives 3.5 credits
World Language 2.0 credit	+	Fine Arts 2.0 credit	= 24	

4. What is a Graduation Pathway?

Graduation Pathways are options for students to demonstrate readiness for their individual education and career goals after high school aligned with your High School & Beyond Plan.

- State assessment** – Smarter Balanced Assessments
- Dual credit courses** – AP, College in the High School, CTE Dual Credit and Running Start
- AP exams**
- College entrance exams** – SAT
- Transition courses** – Bridge to College Math
- CTE Pathway** – Specific sequence of CTE courses
- Armed Services Vocational Aptitude Battery (ASVAB)**

Planning for High School & Beyond

<p>5. How do I check my graduation pathway progress?</p>	<p>Once logged in to Naviance, scroll down to the bottom-right on the main page.</p> <p>Locate your Student Readiness Indicators section.</p>  <p>Click Go to My Planner to get detailed information on your progress towards meeting the ELA and Math pathways.</p>
<p>6. You High School & Beyond Plan Survey is about your current and future plans.</p> <p>Each year your answers may change as your interests and goals develop.</p>	<p>To access the survey, click Planner > Tasks</p> <p>Click the title of the survey to begin</p> <p>When the survey is complete click </p> 
<p>7. Task Completion:</p>	<p>To complete the lesson, click Planner>Tasks.</p> <p>Make sure that your My High School and Beyond Plan 9-11th Grade Yr. is listed under Completed Tasks</p>